



Office of
Deputy Commissioner
of Maritime Affairs

THE REPUBLIC OF LIBERIA LIBERIA MARITIME AUTHORITY

22980 Indian Creek Drive
Suite 200
Dulles, Virginia 20166, USA
Tel: +1 703 790 3434
Fax: +1 703 790 5655
Email: prevention@liscr.com
Web: www.liscr.com

22 July 2024

Marine Advisory: 19/2024

Subject: Port Hedland, Australia - CCTV camera at the steering gear flat for Capesize vessels

Dear Shipowner/Operator/Master:

The purpose of this Marine Advisory is to inform shipowners, operators, and masters of the recently issued [Marine Safety Bulletin 02/2024](#) by the authorities of Port Hedland, Australia. The objective is to provide awareness of specific requirements for specific ship type calling Pilbara Ports, Port Hedland.

Overview

Pilbara Ports to enhance navigational safety and operational efficiency within the Port of Port Hedland, has implemented the following new requirement for Cape-size vessels entering and operating within the Port. The purpose of this initiative is to enhance the safety of navigation within the port by providing pilots with immediate visual feedback on the rudder position.

Effective from 1st January 2025, all Capesize vessels (nominal deadweight \geq 120,000) are to be fitted with a minimum of one (1) Closed-Circuit Television (CCTV) rudder camera installed at the steering gear flat, positioned in such a way that clearly captures the rudder angles during manoeuvring.

A monitor must be placed on the wheelhouse in the proximity of coning positions, providing real-time visual CCTV camera feedback of the rudder angle for Marine Pilot/bridge team reference during the transit to/from berth.

- The CCTV camera must be mounted on top or in front of the rudder in the steering gear flat.
- The CCTV camera must be positioned to provide a clear and unobstructed view of the rudder angle.
- A CCTV camera monitor must be installed on the bridge where it is easily visible to the Marine Pilot/ bridge team.
- The CCTV camera monitor must display real-time footage from the steering gear flat, ensuring the pilot can accurately monitor and adjust the rudder angles during navigation.
- The CCTV system should be robust and capable of functioning effectively in the maritime environment. It should provide high-resolution images and reliable performance in all operating conditions.

All vessel operators of Capesize vessels (nominal deadweight \geq 120,000) are required to comply with this new safety measure by 1st January 2025.

Marine pilots will verify the availability and functionality of the system to ensure adherence to this requirement.

If you have any questions, please contact our Fleet Performance Department at Telephone: +1-703-790-3434 or by email to prevention@liscr.com.

Capesize vessels (nominal deadweight \geq 120,000) to be equipped with a CCTV camera at the steering gear flat

Issue Date: 30/05/2024

Mariners and Port users,

Pilbara Ports maintains a high focus on managing risk within Port Hedland's main shipping channel and inner harbour. To enhance navigational safety and operational efficiency within the Port of Port Hedland, Pilbara Ports are implementing a new requirement for Capesize vessels (nominal deadweight \geq 120,000) entering and operating within the port.

New Requirement:

Effective from 1st Jan 2025, all Capesize vessels (nominal deadweight \geq 120,000) are to be fitted with a minimum of one (1) Closed-Circuit Television (CCTV) rudder camera installed at the steering gear flat, positioned in such a way that clearly captures the rudder angles during manoeuvring.

A monitor must be placed on the wheelhouse in the proximity of coning positions, providing real-time visual CCTV camera feedback of the rudder angle for Marine Pilot/bridge team reference during the transit to/from berth.

Details:

CCTV Camera Installation:

- The CCTV camera must be mounted on top or in front of the rudder in the steering gear flat.
- The CCTV camera must be positioned to provide a clear and unobstructed view of the rudder angle.

Bridge Monitor:

- A CCTV camera monitor must be installed on the bridge where it is easily visible to the Marine Pilot/ bridge team.
- The CCTV camera monitor must display real-time footage from the steering gear flat, ensuring the pilot can accurately monitor and adjust the rudder angles during navigation.

System Requirements:

- The CCTV system should be robust and capable of functioning effectively in the maritime environment. It should provide high-resolution images and reliable performance in all operating conditions.

Purpose:

The purpose of this initiative is to enhance the safety of navigation within the port by providing pilots with immediate visual feedback on the rudder position. This will;

- Improve bridge team situational awareness.
- Enhance decision-making during critical operations.
- Reduce the risk of navigation-related incidents.
- Enhance overall vessel handling and safety.

Compliance:

All vessel operators of Capesize vessels (nominal deadweight \geq 120,000) are required to comply with this new safety measure by 01st January 2025.

Marine pilots will verify the availability and functionality of the system to ensure adherence to this requirement.

Support:

For assistance with installation or any queries regarding this new requirement, please contact Pilbara Ports Port Hedland Harbour Master Team: PH.HMTeam@pilbaraports.com.au

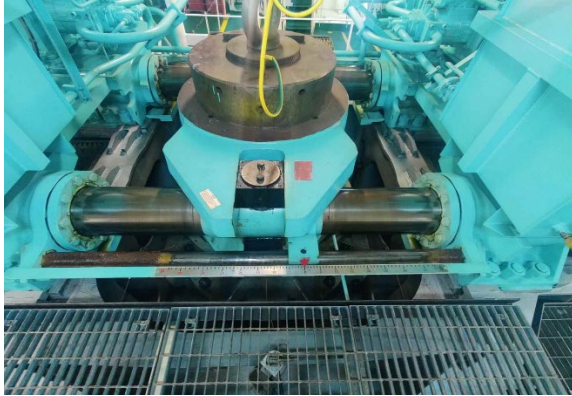
Pilbara Ports appreciates your cooperation and commitment to maintaining the highest standards of marine safety at the Port of Port Hedland.

Sample photos are attached below for your reference,



**Behrouz Daei Zadeh
Harbour Master East (Port Hedland)**

Picture Captured from a CCTV Camera in front of the rudder in steering flat



Sample of real-time feed to a CCTV Monitor in the wheelhouse.



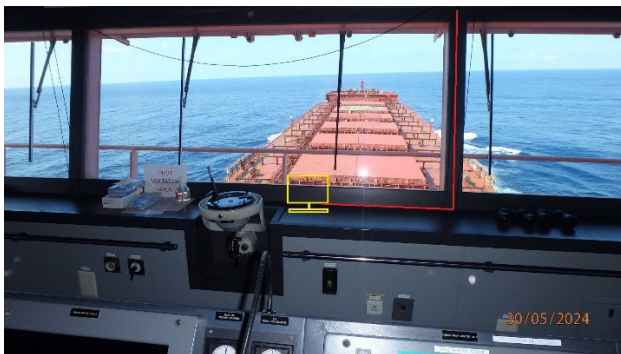
Proposed location AFT on the LO tanks



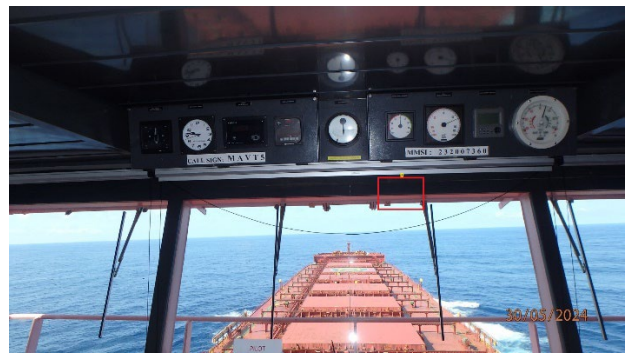
Proposed location of camera on the Phones and Gyro repeater panel



Proposed location of monitor on the Bridge



Proposed location on the Bridge



View from the Proposed location FWD on the Phones and Gyro repeater panel



View of camera if mounted on the LO tanks



All current local Marine Safety Bulletins are available on our website. Link: [Marine Safety Bulletins](#)
Please address any questions on this marine safety bulletin to the Port Hedland Marine Operations Team
Email: PH.HMTeam@pilbaraports.com.au